

Dentapreg®PFU

Idéal pour Bridges Postérieurs

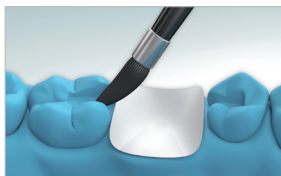
Mode d'emploi



1



2



3



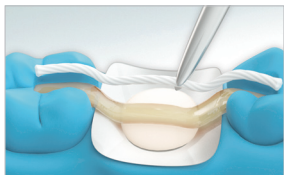
4



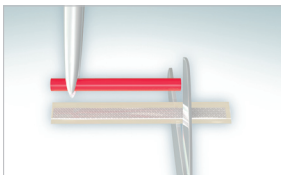
5



6



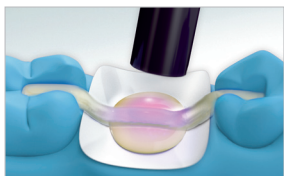
7



8



9



10



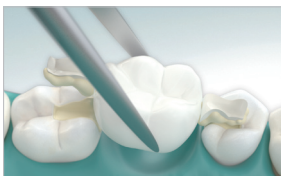
11



12



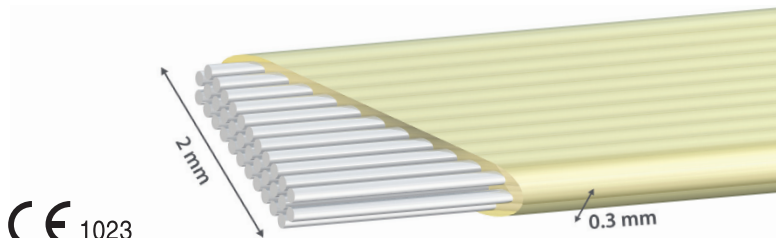
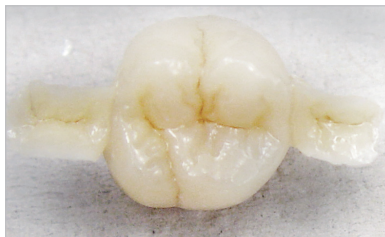
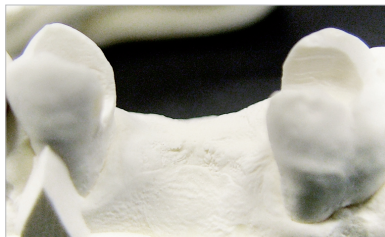
13



14



15



CE 1023

Marquage CE obtenu en Mai 2010

Fabricant : ADM, a.s. - U Vodárny 2 - 616 00 Brno - République Tchèque - www.dentapreg.com

Distributeur pour la France : Bisico France - 120 allée de la Coudoulette - 13680 Lançon de Provence - www.bisico.fr